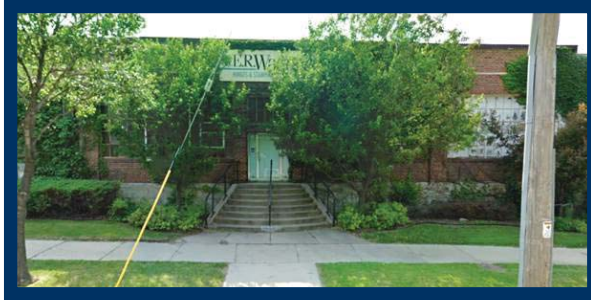


"Aggressively Pursuing Your Real Estate Needs"

**4611 N. 32nd Street
3237-3247 W. Glendale Ave
Milwaukee, WI 53209**

THE
DICKMAN
COMPANY, INC.
REAL ESTATE



SALE PRICE: \$950,000

CONTACT:
Roger B. Siegel
Roger@dickmanrealestate.com
Nick Keys
Nick@dickmanrealestate.com
(414) 271.6100

Industrial Building for Sale

4611 N. 32nd Street

Building Size: 98,600 SF
Office Space: 7,729 SF
Lot Size: 3.574 Acres
Clear Height: 12' - 22'
Year Renovated: 1966
Construction: Masonry
Loading: (5) Docks, (1) Drive-In
Sprinklered: 66%
Assessment: \$107,200 - Land
\$287,700 - Improvements
\$394,900 - Total

Total Building Size: 150,200 SF
Office Space: 10,150 SF
Warehouse Space: 140,095 SF
Total Site Size: 6.074 Acres

3237 - 3247 W. Glendale

Lot Size: 2.50 Acres
Assessment: \$75,000 - Land
\$426,100 - Improvements
\$501,100 - Total

BUILDING 1 - 3237

Building Size: 10,000 SF
Office Space: None
Clear Height: 28'
Construction: Metal
Loading: (2) Docks, (1) Drive-In
Sprinklered: Yes

BUILDING 2 - 3247

Building Size: 41,600 SF
Office Space: 2,376 SF
Clear Height: 17'
Year Renovated: 1979
Construction: Masonry
Loading: (2) Docks, (1) Drive-In
Sprinklered: Yes

CORFAC
International

626 E. Wisconsin Avenue • Suite 1020 • Milwaukee, Wisconsin 53202 • Phone: (414) 271-6100 • Fax: (414) 271-5125

THE
DICKMAN
COMPANY, INC.
REAL ESTATE

Information contained herein was provided by Seller, Lessor and/or third parties. While it is believed to be reliable, Broker makes no warranty or representation as to the accuracy thereof.

BROKER DISCLOSURE TO NON-RESIDENTIAL CUSTOMERS

1 Prior to negotiating on your behalf the Broker must provide you the following disclosure statement:

2 **BROKER DISCLOSURE TO CUSTOMERS**

3 You are a customer of the broker. The broker is either an agent of another party in the transaction or a subagent of another broker
4 who is the agent of another party in the transaction. The broker, or a salesperson acting on behalf of the broker, may provide
5 brokerage services to you. Whenever the broker is providing brokerage services to you, the broker owes you, the customer, the
6 following duties:

- 7 ■ The duty to provide brokerage services to you fairly and honestly.
- 8 ■ The duty to exercise reasonable skill and care in providing brokerage services to you.
- 9 ■ The duty to provide you with accurate information about market conditions within a reasonable time if you request it, unless
10 disclosure of the information is prohibited by law.
- 11 ■ The duty to disclose to you in writing certain material adverse facts about a property, unless disclosure of the information is
12 prohibited by law (See Lines 47-55).
- 13 ■ The duty to protect your confidentiality. Unless the law requires it, the broker will not disclose your confidential information or the
14 confidential information of other parties (See Lines 22-39).
- 15 ■ The duty to safeguard trust funds and other property the broker holds.
- 16 ■ The duty, when negotiating, to present contract proposals in an objective and unbiased manner and disclose the advantages and
17 disadvantages of the proposals.

18 Please review this information carefully. A broker or salesperson can answer your questions about brokerage services, but if you
19 need legal advice, tax advice, or a professional home inspection, contact an attorney, tax advisor, or home inspector.

20 This disclosure is required by section 452.135 of the Wisconsin statutes and is for information only. It is a plain-language summary of
21 a broker's duties to a customer under section 452.133 (1) of the Wisconsin statutes.

22 **CONFIDENTIALITY NOTICE TO CUSTOMERS**

23 BROKER WILL KEEP CONFIDENTIAL ANY INFORMATION GIVEN TO BROKER IN CONFIDENCE, OR ANY INFORMATION
24 OBTAINED BY BROKER THAT HE OR SHE KNOWS A REASONABLE PERSON WOULD WANT TO BE KEPT CONFIDENTIAL,
25 UNLESS THE INFORMATION MUST BE DISCLOSED BY LAW OR YOU AUTHORIZE THE BROKER TO DISCLOSE PARTICULAR
26 INFORMATION. A BROKER SHALL CONTINUE TO KEEP THE INFORMATION CONFIDENTIAL AFTER BROKER IS NO LONGER
27 PROVIDING BROKERAGE SERVICES TO YOU.

28 THE FOLLOWING INFORMATION IS REQUIRED TO BE DISCLOSED BY LAW:

- 29 1. MATERIAL ADVERSE FACTS, AS DEFINED IN SECTION 452.01 (5g) OF THE WISCONSIN STATUTES (SEE LINES 47-55).
 - 30 2. ANY FACTS KNOWN BY THE BROKER THAT CONTRADICT ANY INFORMATION INCLUDED IN A WRITTEN INSPECTION
31 REPORT ON THE PROPERTY OR REAL ESTATE THAT IS THE SUBJECT OF THE TRANSACTION.
- 32 TO ENSURE THAT THE BROKER IS AWARE OF WHAT SPECIFIC INFORMATION YOU CONSIDER CONFIDENTIAL, YOU MAY LIST
33 THAT INFORMATION BELOW (SEE LINES 35-36). AT A LATER TIME, YOU MAY ALSO PROVIDE THE BROKER WITH OTHER
34 INFORMATION YOU CONSIDER TO BE CONFIDENTIAL.

35 **CONFIDENTIAL INFORMATION:** _____

36 _____

37 **NON-CONFIDENTIAL INFORMATION** (The following information may be disclosed by Broker): _____

38 _____

39 *(INSERT INFORMATION YOU AUTHORIZE THE BROKER TO DISCLOSE SUCH AS FINANCIAL QUALIFICATION INFORMATION.)*

40 **CONSENT TO TELEPHONE SOLICITATION**

41 I/We agree that the Broker and any affiliated settlement service providers (for example, a mortgage company or title company) may
42 call our/my home or cell phone numbers regarding issues, goods and services related to the real estate transaction until I/we
43 withdraw this consent in writing. **List Home/Cell Numbers:** _____

44 **SEX OFFENDER REGISTRY**

45 *Notice: You may obtain information about the sex offender registry and persons registered with the registry by contacting the
46 Wisconsin Department of Corrections on the Internet at: <http://offender.doc.state.wi.us/public/> or by phone at 608-240-5830.*

47 **DEFINITION OF MATERIAL ADVERSE FACTS**

48 A "material adverse fact" is defined in Wis. Stat. § 452.01(5g) as an adverse fact that a party indicates is of such significance, or that
49 is generally recognized by a competent licensee as being of such significance to a reasonable party, that it affects or would affect
50 the party's decision to enter into a contract or agreement concerning a transaction or affects or would affect the party's decision
51 about the terms of such a contract or agreement. An "adverse fact" is defined in Wis. Stat. § 452.01(1e) as a condition or occurrence
52 that a competent licensee generally recognizes will significantly and adversely affect the value of the property, significantly reduce
53 the structural integrity of improvements to real estate, or present a significant health risk to occupants of the property; or information
54 that indicates that a party to a transaction is not able to or does not intend to meet his or her obligations under a contract or
55 agreement made concerning the transaction.

No representation is made as to the legal validity of any provision or the adequacy of any provision in any specific transaction.

"Aggressively
Pursuing Your
Real Estate
Needs"

**4611 N. 32nd Street
3237-3247 W. Glendale Ave
Milwaukee, WI 53209**

THE
DICKMAN
COMPANY, INC.
REAL ESTATE



CONTACT:
Roger B. Siegel
Roger@dickmanrealestate.com
Nick Keys
Nick@dickmanrealestate.com
(414) 271.6100

626 E. Wisconsin Avenue • Suite 1020 • Milwaukee, Wisconsin 53202 • Phone: (414) 271-6100 • Fax: (414) 271-5125

CORFAC
International

THE
DICKMAN
COMPANY, INC.
REAL ESTATE

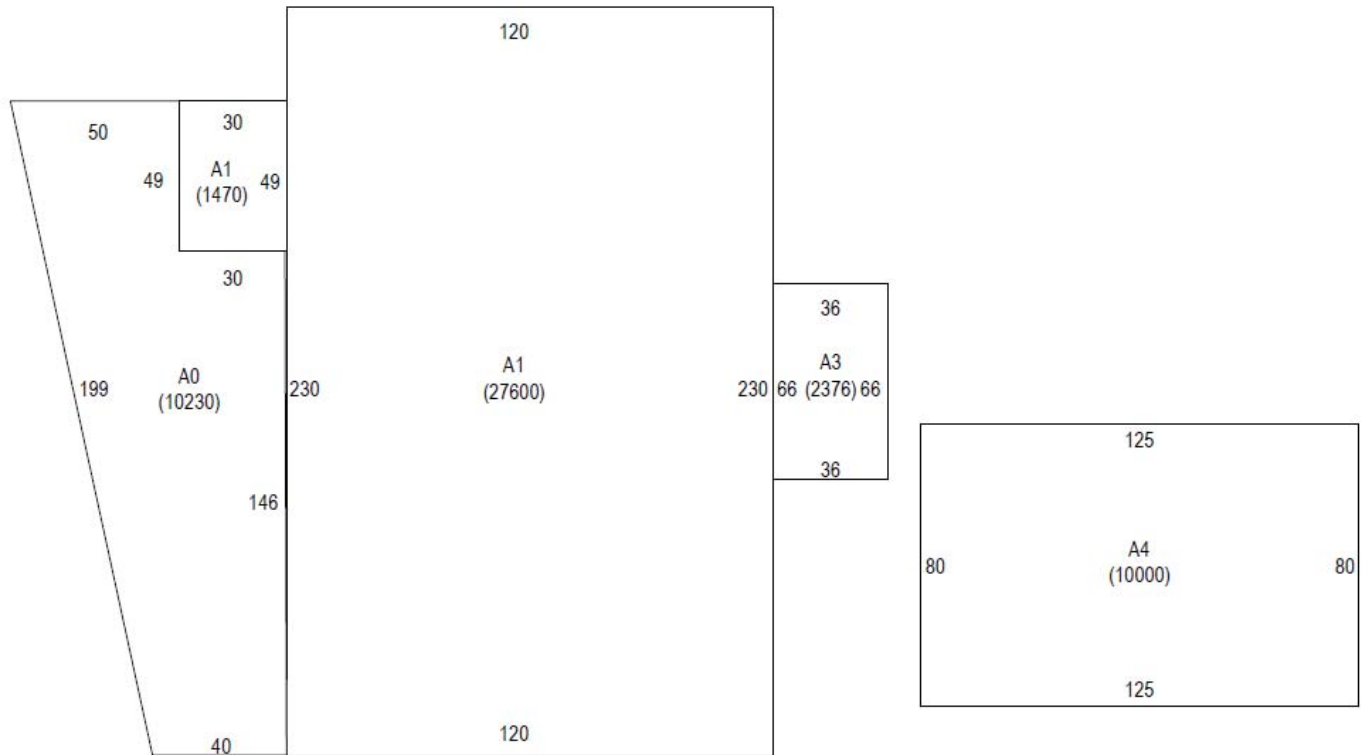
Information contained herein was provided by Seller, Lessor and/or third parties. While it is believed to be reliable, Broker makes no warranty or representation as to the accuracy thereof.

"Aggressively Pursuing Your Real Estate Needs"

4611 N. 32nd Street 3237-3247 W. Glendale Ave Milwaukee, WI 53209



3237-3247 W. Glendale Avenue



CONTACT:
Roger B. Siegel
Roger@dickmanrealestate.com
Nick Keys
Nick@dickmanrealestate.com
(414) 271.6100



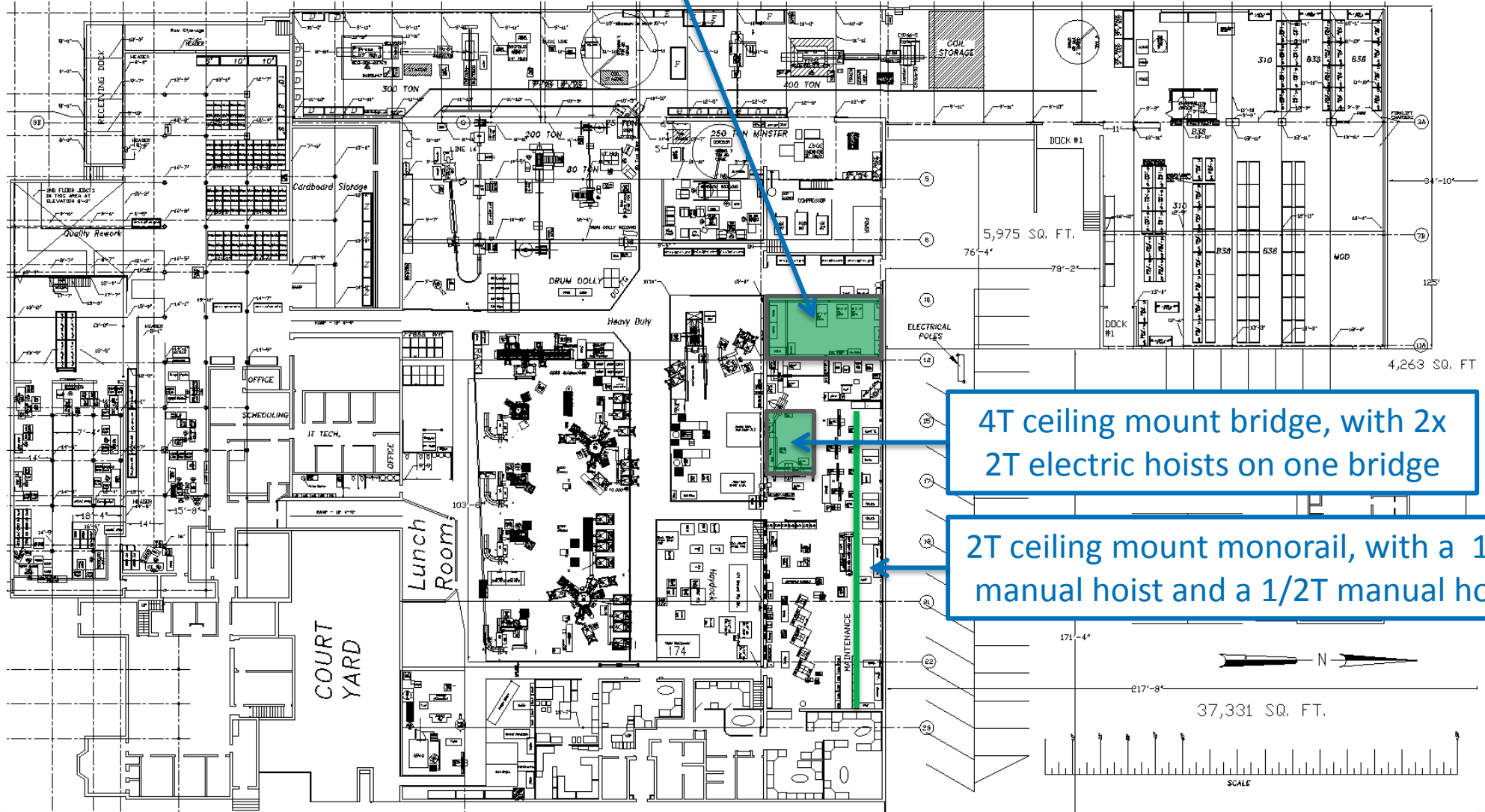
CORFAC
International

626 E. Wisconsin Avenue • Suite 1020 • Milwaukee, Wisconsin 53202 • Phone: (414) 271-6100 • Fax: (414) 271-5125

Information contained herein was provided by Seller, Lessor and/or third parties. While it is believed to be reliable, Broker makes no warranty or representation as to the accuracy thereof.

Building A

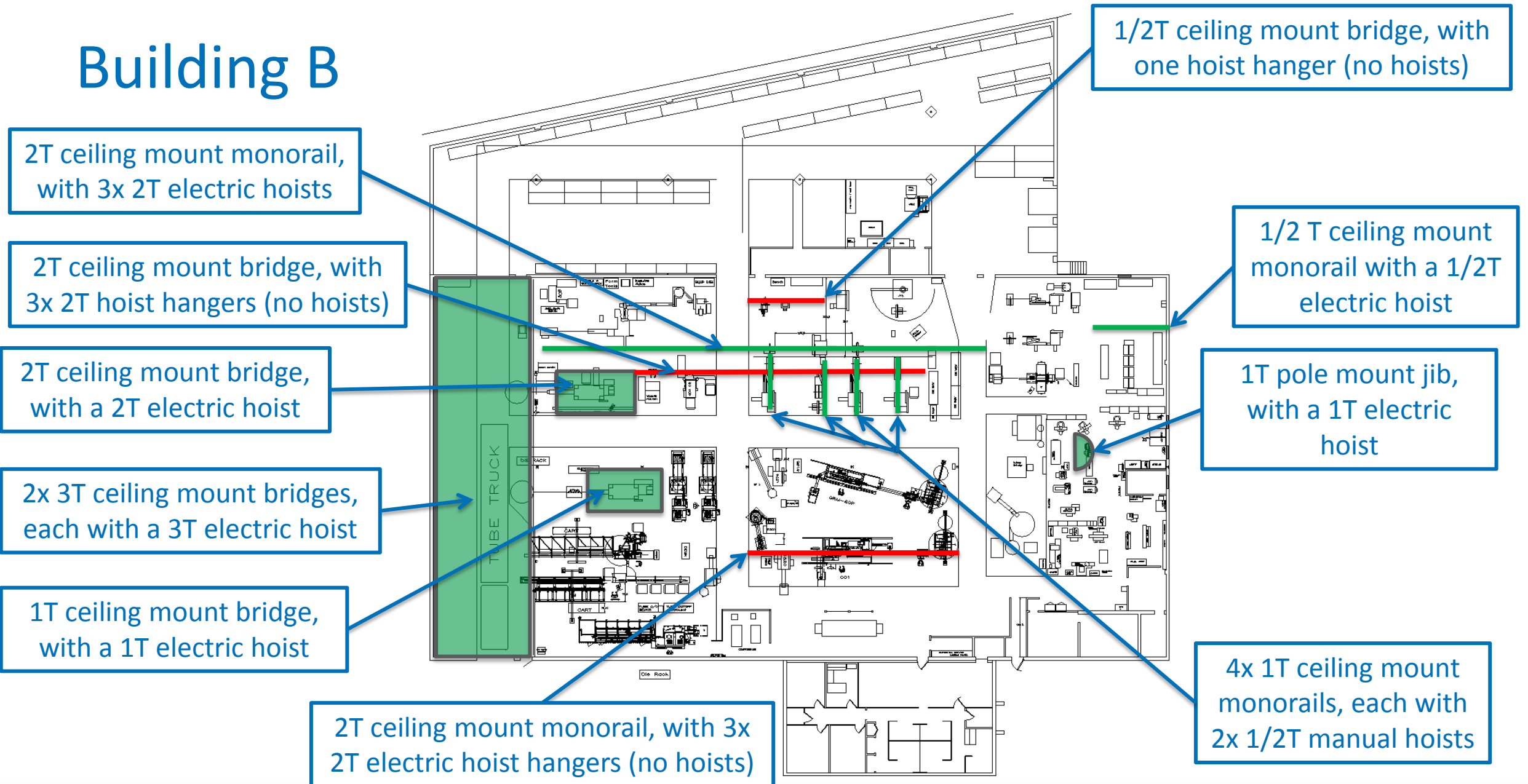
6T freestanding bridge, with 2x 3T electric hoists on one bridge



4T ceiling mount bridge, with 2x 2T electric hoists on one bridge

2T ceiling mount monorail, with a 1.5T manual hoist and a 1/2T manual hoist

Building B



2T ceiling mount monorail, with 3x 2T electric hoists

2T ceiling mount bridge, with 3x 2T hoist hangers (no hoists)

2T ceiling mount bridge, with a 2T electric hoist

2x 3T ceiling mount bridges, each with a 3T electric hoist

1T ceiling mount bridge, with a 1T electric hoist

2T ceiling mount monorail, with 3x 2T electric hoist hangers (no hoists)

1/2T ceiling mount bridge, with one hoist hanger (no hoists)

1/2 T ceiling mount monorail with a 1/2T electric hoist

1T pole mount jib, with a 1T electric hoist

4x 1T ceiling mount monorails, each with 2x 1/2T manual hoists